

# TRIUMPH 2-T8

Block bottom bag machine



# Users of the **TRIUMPH 2-T8** are easily convinced of the machine's value by the servomotors and the **automation features** offered for **ease of operation**.



With the TRIUMPH 2-T8, developed in 2015, GARANT presents a block bottom bag machine which adapts perfectly to market requirements. Due to its extended cut-off length, the TRIUMPH 2-T8 is ideal for the increasingly small batch sizes and the quickly changing order situations. Numerous servomotors permit a high degree of automation. The TRIUMPH 2-T8 offers itself as a flexible machine with short set-up times.

The TRIUMPH 2-T8 can be equipped with various additional devices as well as an inline printer to meet customer specific needs.

#### Format ranges for the TRIUMPH 2-T8

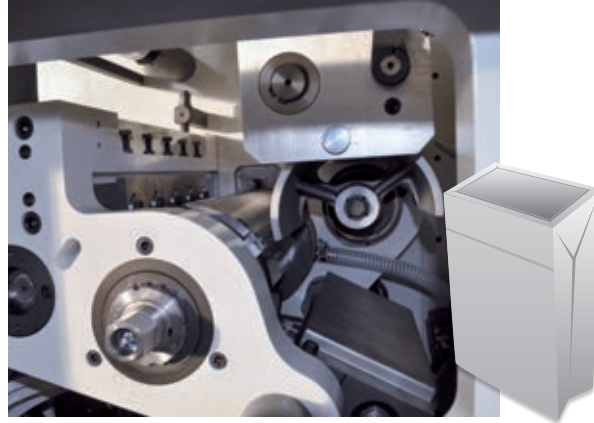
Bag width	3.15–11.02 inch	80–280 mm
Bottom width	1.97–6.30 inch	50–160 mm
Cut-off length	9.84–21.65 inch	250–550 mm

# Optional additional devices

**SERVO window die cut unit**



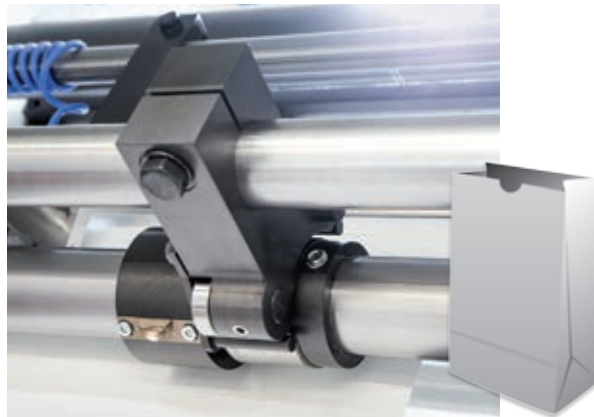
**Bottom patch unit**



**Inline printer LINAFLIX NL**



**Thumb hole unit**



**Feeding unit/cross pasting**



# Format ranges for all TRIUMPH models

		TRIUMPH 2B	TRIUMPH 2-T8	TRIUMPH 3 MR	TRIUMPH 3G	TRIUMPH 5 QT	TRIUMPH 5 XB
Bag width	[mm]	70–230	80–280	105–320	150–320	180–460	320–540
Bottom width	[mm]	40–140	50–160	55–180	70–200	70–230	120–350
Cut-off length	[mm]	200–470	250–550	240–650	360–770	360–770	420–770
Roll width	[mm]	max. 770	max. 900	max. 1070	max. 1070	max. 1370	max. 1520
Roll diameter	[mm]	max. 1300	max. 1300	max. 1300	max. 1300	max. 1300	max. 1300

		TRIUMPH 2B	TRIUMPH 2-T8	TRIUMPH 3 MR	TRIUMPH 3G	TRIUMPH 5 QT	TRIUMPH 5 XB
Bag width	[inch]	2.76–9.06	3.15–11.02	4.13–12.60	5.91–12.60	7.09–18.11	12.60–21.26
Bottom width	[inch]	1.57–5.51	1.97–6.30	2.17–7.09	2.76–7.87	2,76–9.06	4.72–13.78
Cut-off length	[inch]	7.87–18.50	9.84–21.65	9.45–25.59	14.17–30.31	14.17–30.31	16.54–30.31
Roll width	[inch]	max. 30.31	max. 35.43	max. 42.13	max. 42.13	max. 53.94	max. 59.84
Roll diameter	[inch]	max. 51.18	max. 51.18	max. 51.18	max. 51.18	max. 51,18	max. 51,18