

# Reliable data for more output

How RUBY Track helped TENAX to identify hidden production potential



## Start digitizing the value chain

Papiersackfabrik Tenax GmbH & Co. KG is one of the most effective and successful industrial sack manufacturers in Europe. Quality and flexibility are the pillars of their operations and they continuously push development to create the best products.

In 2018, TENAX and W&H initiated a collaboration in order to break new ground. As a part of this cooperation, TENAX implemented W&H's IoT system, RUBY to digitize their production and the value chain.

## RUBY Track extension for converting machines

Within the RUBY system, TENAX works with the RUBY Track extension, which was developed specifically for converting machines. All W&H paper sack machines at

**” Thanks to RUBY Track we can benchmark our production runs and optimize target speeds. It was possible to generate more output.**

**Reinhard Schulze-Edinghausen**

CEO, Papiersackfabrik Tenax GmbH & Co. KG

TENAX have access to RUBY Track through the intuitive operator panel. If operator input is needed, it can be done with a few clicks.



### Performance

Increased output & optimization of target speeds



### Collaboration

Combined know-how from TENAX and W&H makes RUBY more intelligent



### Next Steps

Continue collaborating to drive improvement

### Automatic data collection at the machine

With RUBY Track for collecting data, making notes on a piece of paper is a thing of the past since TENAX changed to RUBY as the main system for gathering production data. RUBY Track automatically recognizes general and job-related reasons for downtime. This enabled TENAX to identify and utilize their hidden production potential using the accurate and reliable data from RUBY.

### Increased output

Previously subjective decisions such as when did the job start and how long did the setup take, have been replaced by data-based algorithms thanks to RUBY Track. Now it is possible for TENAX to derive reliable measures and to generate more output.

### Together into the future

Both companies meet each other regularly in order to identify and work towards further improvements. Currently we are working on enhancing the automatic product recognition and the calculation for estimated machine set-up times. Thanks to these developments, we've promised ourselves unprecedented analytical possibilities, including benchmarking production runs. Together we expect to define perfect target speeds.

We are looking forward to continuing this fruitful collaboration with TENAX in the future and to operate as a reliable partner for improving production performance.

## Customer profile



### Industry

#### Paper sacks for

- Animal Feed
- Building materials
- Chemical products
- Food
- Seeds



### Product

#### Exception quality industrial sacks

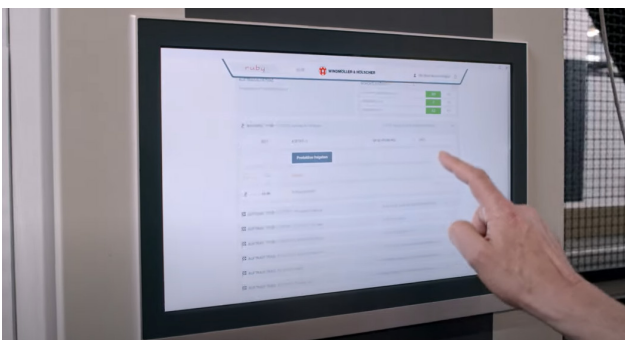


### Location

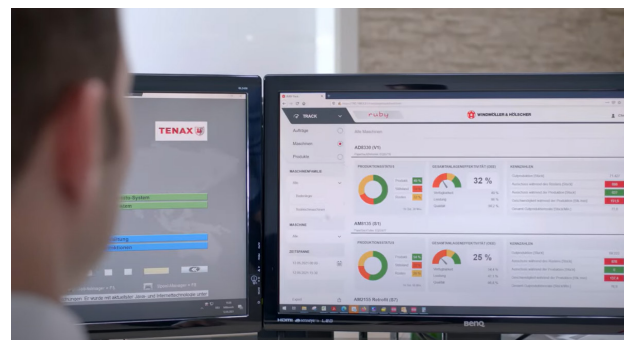
#### Ratingen, Germany

more than 140 employees  
[www.tenax.de](http://www.tenax.de)

RUBY Track is available for all modern W&H Paper sack lines. Retrofits are also possible.



The W&H machines at TENAX have direct access to RUBY through the intuitive operator interface.



Perform analyses of production data in the office to identify improvements that will boost performance.