

TRIUMPH 2B

Block bottom bag machine



With the **TRIUMPH 2B**, you can produce small-format block bottom bags. You can thus profit from several **great benefits.**



Developed and launched onto the market by Windmüller & Hölscher in 1982, the TRIUMPH 2B has been sold over 200 times worldwide. Therefore it is the most well-known block bottom bag machine from the TRIUMPH-machine range.

GARANT has continuously developed the TRIUMPH 2B and has optimally adapted it to the increasing market demands. Its current equipment and the consistently exemplary robust construction still make the TRIUMPH 2B the most popular machine for the production of small-format block bottom bags today.

Naturally, the TRIUMPH 2B can be equipped with various additional devices and an inline printing mechanism, and thus set up for specific requirements.

Format ranges for the TRIUMPH 2B

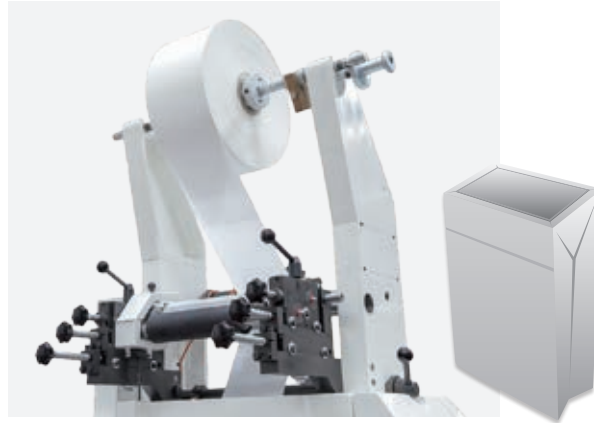
Bag width	2.76–9.06 inch	70–230 mm
Bottom width	1.57–5.51 inch	40–140 mm
Cut-off length	7.87–18.50 inch	200–470 mm

Optional additional devices

SERVO window die cut unit



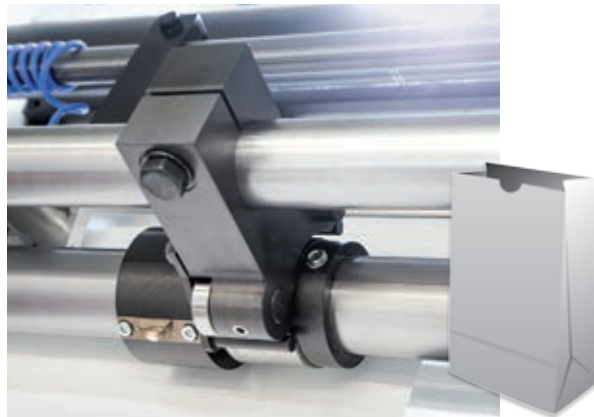
Bottom patch unit



Inline printer LINAFLIX NL



Thumb hole unit



Feeding unit/cross pasting



Format ranges for all TRIUMPH models

		TRIUMPH 2B	TRIUMPH 2-T8	TRIUMPH 3 MR	TRIUMPH 3G	TRIUMPH 5 QT	TRIUMPH 5 XB
Bag width	[mm]	70–230	80–280	105–320	150–320	180–460	320–540
Bottom width	[mm]	40–140	50–160	55–180	70–200	70–230	120–350
Cut-off length	[mm]	200–470	250–550	240–650	360–770	360–770	420–770
Roll width	[mm]	max. 770	max. 900	max. 1070	max. 1070	max. 1370	max. 1520
Roll diameter	[mm]	max. 1300	max. 1300	max. 1300	max. 1300	max. 1300	max. 1300

		TRIUMPH 2B	TRIUMPH 2-T8	TRIUMPH 3 MR	TRIUMPH 3G	TRIUMPH 5 QT	TRIUMPH 5 XB
Bag width	[inch]	2.76–9.06	3.15–11.02	4.13–12.60	5.91–12.60	7.09–18.11	12.60–21.26
Bottom width	[inch]	1.57–5.51	1.97–6.30	2.17–7.09	2.76–7.87	2,76–9.06	4.72–13.78
Cut-off length	[inch]	7.87–18.50	9.84–21.65	9.45–25.59	14.17–30.31	14.17–30.31	16.54–30.31
Roll width	[inch]	max. 30.31	max. 35.43	max. 42.13	max. 42.13	max. 53.94	max. 59.84
Roll diameter	[inch]	max. 51.18	max. 51.18	max. 51.18	max. 51.18	max. 51,18	max. 51,18