

TRIUMPH 5 QT

Block bottom bag machine



The **TRIUMPH 5 QT** convinces the user with high machine outputs – meaning that even smaller order quantities can be **economically** produced.



The TRIUMPH 5 QT was launched onto the market by Windmüller & Hölscher and has been an important component of the block bottom bag machine range at GARANT since 1998. Consistent development by GARANT and the use of SERVO technology has led to a reduction of up to 50 % in the set-up times on format changes in comparison to other block bottom bag machines.

For many customers, the machine is popular due to the high production speeds, but also due to the simplified operation, and is ideal for the manufacture of large-format block bottom bags and carrier bags.

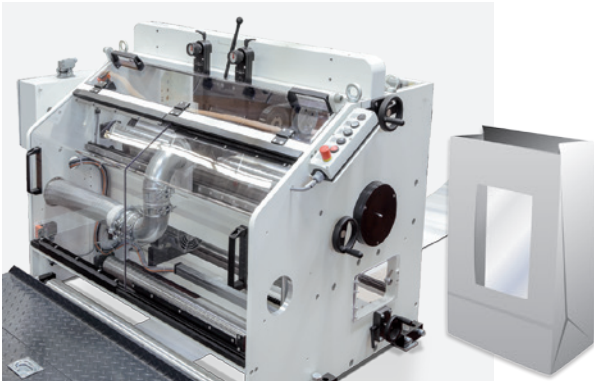
Naturally, the TRIUMPH 5 QT can be equipped with various additional devices and an inline printing mechanism, and thus set up for specific requirements.

Format ranges for the TRIUMPH 5 QT

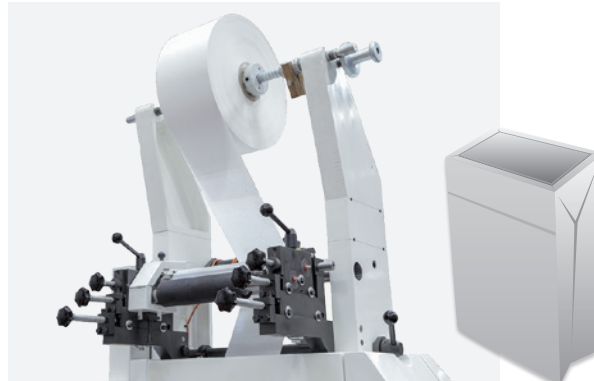
Bag width	7.09–18.11 inch	180–460 mm
Bottom width	2.76–9.06 inch	70–230 mm
Cut-off length	14.17–30.31 inch	360–770 mm

Optional additional devices

SERVO window die cut unit



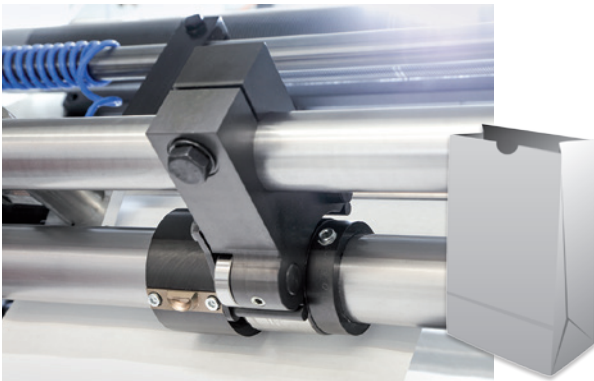
Bottom patch unit



Inline printer LINFLEX NL



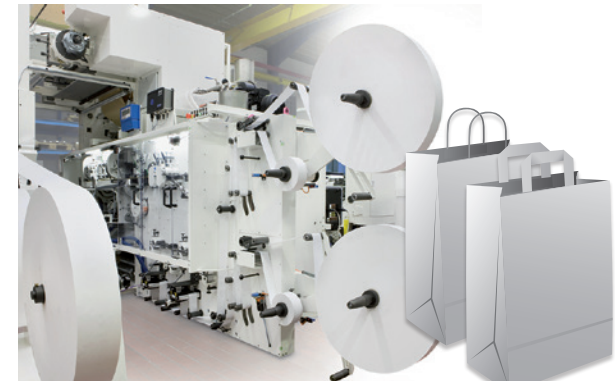
Thumb hole unit



Feeding unit/cross pasting



Flat or twisted handle unit



Format ranges for all TRIUMPH models

		TRIUMPH 2B	TRIUMPH 2-T8	TRIUMPH 3 MR	TRIUMPH 3G	TRIUMPH 5 QT	TRIUMPH 5 XB
Bag width	[mm]	70–230	80–280	105–320	150–320	180–460	320–540
Bottom width	[mm]	40–140	50–160	55–180	70–200	70–230	120–350
Cut-off length	[mm]	200–470	250–550	240–650	360–770	360–770	420–770
Roll width	[mm]	max. 770	max. 900	max. 1070	max. 1070	max. 1370	max. 1520
Roll diameter	[mm]	max. 1300	max. 1300	max. 1300	max. 1300	max. 1300	max. 1300

		TRIUMPH 2B	TRIUMPH 2-T8	TRIUMPH 3 MR	TRIUMPH 3G	TRIUMPH 5 QT	TRIUMPH 5 XB
Bag width	[inch]	2.76–9.06	3.15–11.02	4.13–12.60	5.91–12.60	7.09–18.11	12.60–21.26
Bottom width	[inch]	1.57–5.51	1.97–6.30	2.17–7.09	2.76–7.87	2.76–9.06	4.72–13.78
Cut-off length	[inch]	7.87–18.50	9.84–21.65	9.45–25.59	14.17–30.31	14.17–30.31	16.54–30.31
Roll width	[inch]	max. 30.31	max. 35.43	max. 42.13	max. 42.13	max. 53.94	max. 59.84
Roll diameter	[inch]	max. 51.18	max. 51.18	max. 51.18	max. 51.18	max. 51.18	max. 51.18

Garant Maschinenhandel GmbH

Münsterstraße 91 · 49525 Lengerich · Germany · Tel.: +49 5481 809-0 · Fax: +49 5481 809-109
 infos@garant-maschinen.de · www.garant-maschinen.de



GARANT MASCHINEN

MEMBER OF W&H-GROUP